





Smartcard Charger for Mutoh Installation and Operation Manual



Smart Chip Card Recharge solution for Mutoh printers



Revised 21 April 2010

TABLE OF CONTENTS:

Introduction	2
Installing the ChipCharger Driver for Windows 2000/XP/Vista.....	2
Installing the ChipCharger Software	2
Recharging the Smart Cards.....	3
Verifying Smart Cards	3
Transferring Codes between Printers	3

Introduction

Smart card recharge solution allows you to create smart cards that will be accepted by Mutoh Valujet, Rockhopper, Spitfire and other large-format Mutoh printers. The system uses USB smartcard reader/writer that works with Windows 2000, XP and Vista, 32 bit. You will need blank smart cards. For Valuejet 1614, you will need special blank smart cards as they use different type of cards.

Installing the ChipCharger Driver for Windows 2000/XP/Vista

The driver for ChipCharger will work under Windows 2000, XP, Vista.

1. Look for the sticker at the bottom of the ChipCharger, it contains the login and password for your account. It might be sent to you via email.
2. Go to this web site: www.solventcartridges.com and click on Tech Support.
3. Click on the link "InkStream Customers Login Here".
4. Enter your login name and password found on the sticker. Click "Login".
5. On the next screen you will see your company information and information about your printers. On the bottom of the screen you will see the links to **ChipCharger Software (Windows) ver... NEW** and **SmartCard USB reader driver (Windows)**. Download both of them.
6. Unzip the **smartcard_reader_driver_win32.zip** file into some folder.
7. Go to that folder and run **Setup2500x86.exe**
8. Follow the instructions and complete setup.
9. If you are be asked to reboot, please do so.

Installing the ChipCharger Software

1. Run the **charger_setup_[version].exe** file you downloaded, and install the ChipCharger software.
2. Look for program and run it by going into **Start – All Programs – ChipCharger**.
3. Go to **Options – Settings**. Here you will need to select **Smart card reader** for hardware and enter your **login** and **password**. Click **Test settings** – you should see **Success**. If it says **Authorization failed**, it means you have entered incorrect login/password, or you don't have the Internet access.
4. Make sure **Keep 0 codes locally** is entered. **Do not enter any number other than 0**. This parameter is made for those who don't have a constant Internet connection.
5. If your firewall is blocking the Internet access to ChipCharger, please unblock it. Internet connection is required for operation of the software.

Recharging the Smart Cards

Please note that the Internet connection is required for recharging the chips.

- Run the ChipCharger software. If you have more than one printer registered, select the correct **printer**. The Green LED on the Charger must light up.
- Insert a blank smart card into the Charger, gold contacts facing up.
- Select the desired color and press **Recharge**.
- When the software has reported a successful completion of recharging, you can remove the smart card and use it on your printer.
- If the recharging wasn't successful, it could be caused by incorrect type of smart card (note that Valuejet needs Type 2 cards), or the card is write-protected.

Verifying Smart Cards

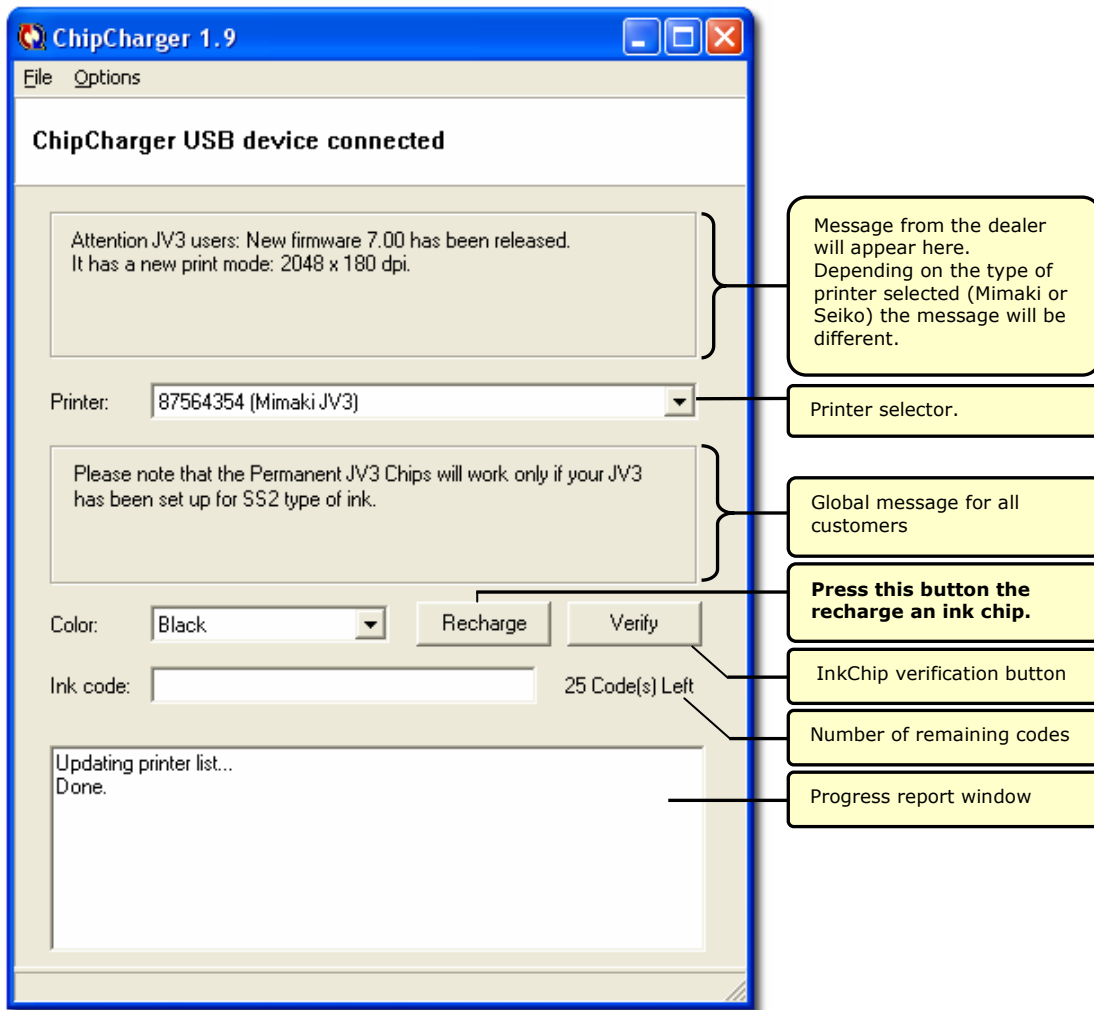
ChipCharger software provides a function to verify if the Smart card has a correct data.

- Run the ChipCharger software. If you have more than one printer registered, select the correct printer. The Green LED on the Charger must light up.
- Insert the smart card into the Charger, gold contacts facing up.
- In the software window, press **Verify**. If verification was successful it will say "Verification OK" and show the color.
- Please note that after recharging a smart card becomes write-protected. When you verify it, the Charger will say **protection register failed** in this case. Blank cards are open for writing, so the Charger will say **protection register verified**.

Transferring Codes between Printers

If you have more than 1 printer on your account and you want to transfer recharge credits (codes) between them:

1. Go to www.solventcartridges.com and click on Tech Support.
2. Click on the link "InkStream Customers Login Here".
3. Enter your login name and password found on the sticker. Click "Login".
4. The main screen shows the list of your printers and the number of codes on each type of printer. Click [Transfer codes].
5. Select destination printer type and enter the number of codes to transfer, and click OK.



With your technical questions please contact your dealer or us at:

Telephone: +1 905 820 8833
Fax: +1 905 820 8768
Email: support@solventcartridges.com